

WOLFF • LYON
ARCHITECTS

• WELLINGTON •
NEIGHBORHOOD
BRECKENRIDGE, COLORADO

CLIENT:
POPFARHOUSE LLC
1400 W. 10TH ST. #200
BOULDER, CO 80502

ARCHITECT:
WOLFF LYON ARCHITECTS
1400 W. 10TH ST. #200
BOULDER, CO 80502
P: (303) 447-2788
F: (303) 447-2888

STRUCTURAL ENGINEER:
MOUNTAIN DESIGN GROUP LLC
2575 TRAVELER SCENE DR., STE. B-1
BOULDER, CO 80502
P: (303) 570-8811
F: (303) 570-8472

OAK

◆ WELLINGTON ◆
NEIGHBORHOOD
BRECKENRIDGE, COLORADO

ISSUE DATES:	DESCRIPTION
DATE: 07/13/08	Structural Review
08/22/08	Construction Set

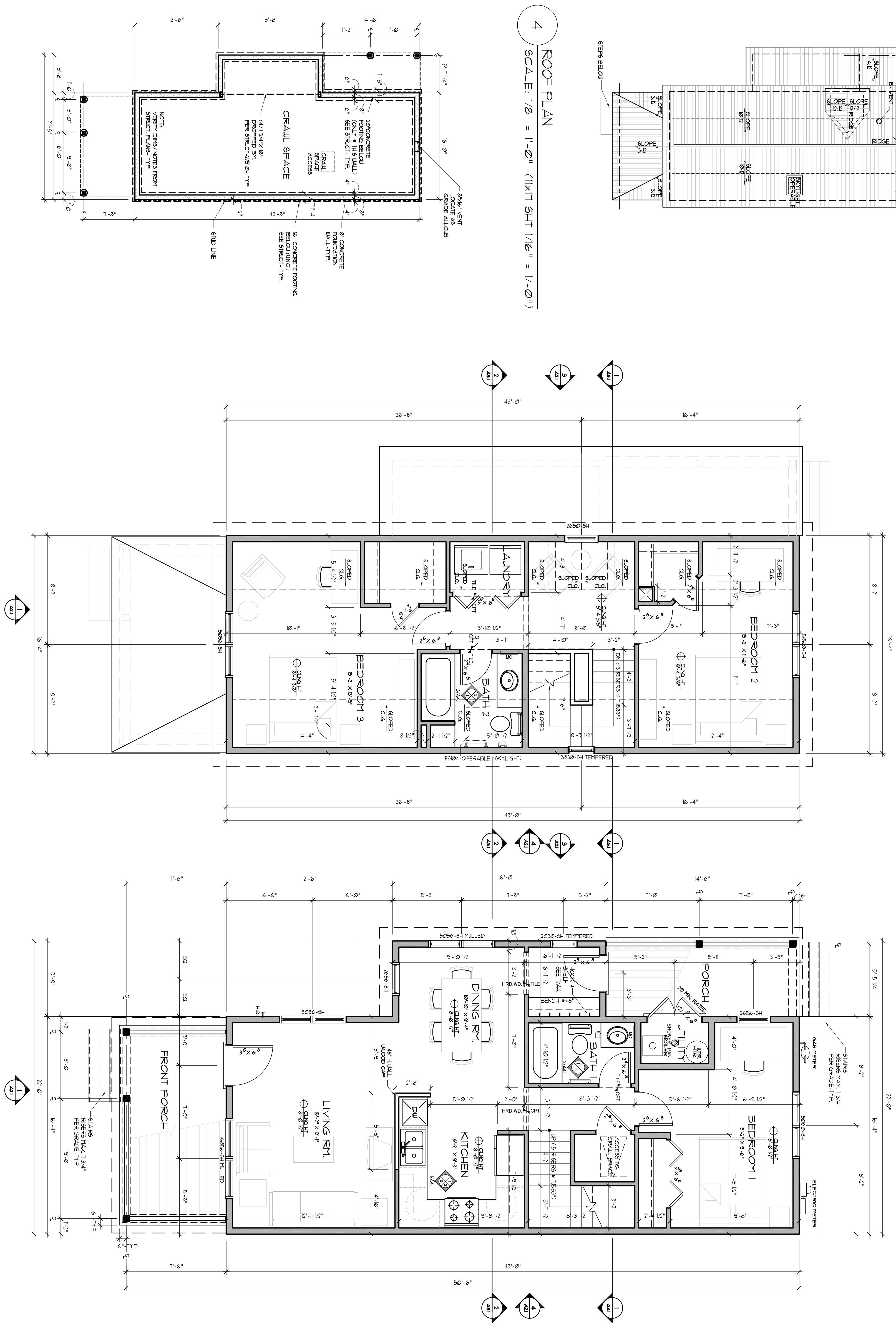
REVISIONS:	DESCRIPTION
DATE:	

DRAWN BY:	DB
PROJECT NO.:	8908

FLOOR PLANS

A1.1

- WINDOW NOTES:**
- 1) MODEL NUMBERS REPRESENT THE 8000 SERIES VINYL WINDOWS FROM HILGARD WINDOWS INC. UNLESS NOTED OTHERWISE ANY SUBSTITUTIONS SHALL BE APPROVED BY THE BUILDING ARCHITECT PRIOR TO ACCEPTANCE OF BID.
 - 2) ALL WINDOWS SHALL BE EQUIPPED WITH REMOVABLE BUG SCREENS, EXCEPT TRANSOM SKYLIGHTS AND BATHS NOTED OTHERWISE ON THE ELEVATIONS.
 - 3) MAIN LEVEL: 1'-2" AFF.
 - 4) UPPER LEVEL: 1'-0" AFF.



1 FIRST LEVEL
SCALE: 1/4" = 1'-0" (1X1T SHT 1/8" = 1'-0") 1425.4 TOTAL SQFT.

2 SECOND LEVEL
SCALE: 1/4" = 1'-0" (1X1T SHT 1/8" = 1'-0") 642 SQFT.

3 FOUNDATION PLAN
SCALE: 1/8" = 1'-0" (1X1T SHT 1/16" = 1'-0")