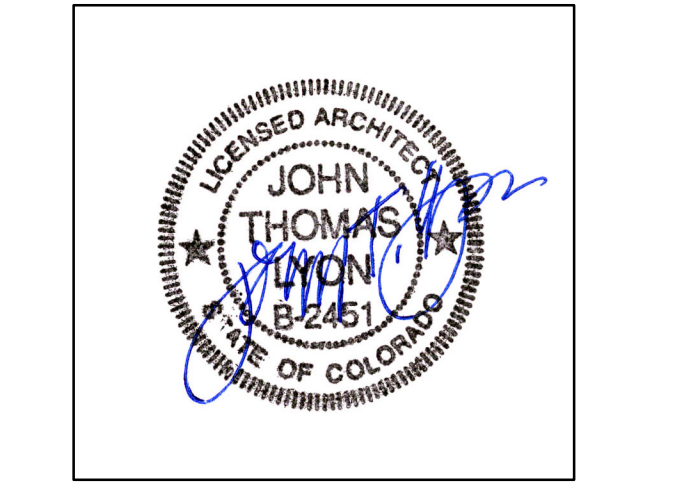


CLIENT:  
POPLARHOUSE LLC  
777 PEARL ST. SUITE 200  
BOULDER, CO 80302

ARCHITECT:  
WOLFF-LYON ARCHITECTS  
777 PEARL STREET - SUITE 210  
BOULDER, CO 80302  
T: (303) 447-2766  
F: (303) 447-2968

STRUCTURAL ENGINEER:  
MOUNTAIN DESIGN GROUP LLC  
29713 TROUTDALE SCENIC DR., STE. B-1  
EVERGREEN, CO 80439  
T: (303) 870-8811  
F: (303) 870-8472



**COTTONWOOD**  
♦ WELLINGTON ♦  
NEIGHBORHOOD  
BRECKENRIDGE, COLORADO

ISSUE DATES:

DATE	DESCRIPTION
01.04.06	S40 REVIEW
02.13.06	S40 REVIEW
03.10.06	WOLFF LYON REDLINES
04.13.06	WOLFF LYON REDLINES
05.19.06	CONSTRUCTION SET

REVISIONS:

DATE	DESCRIPTION
06.21.06	ENTIRE PAGE REVISIONS
07.28.06	REVISIONS
09.25.07	REVISIONS
05.12.11	REVISIONS

DRAWN BY:  
PROJECT No.:  
ELEVATIONS

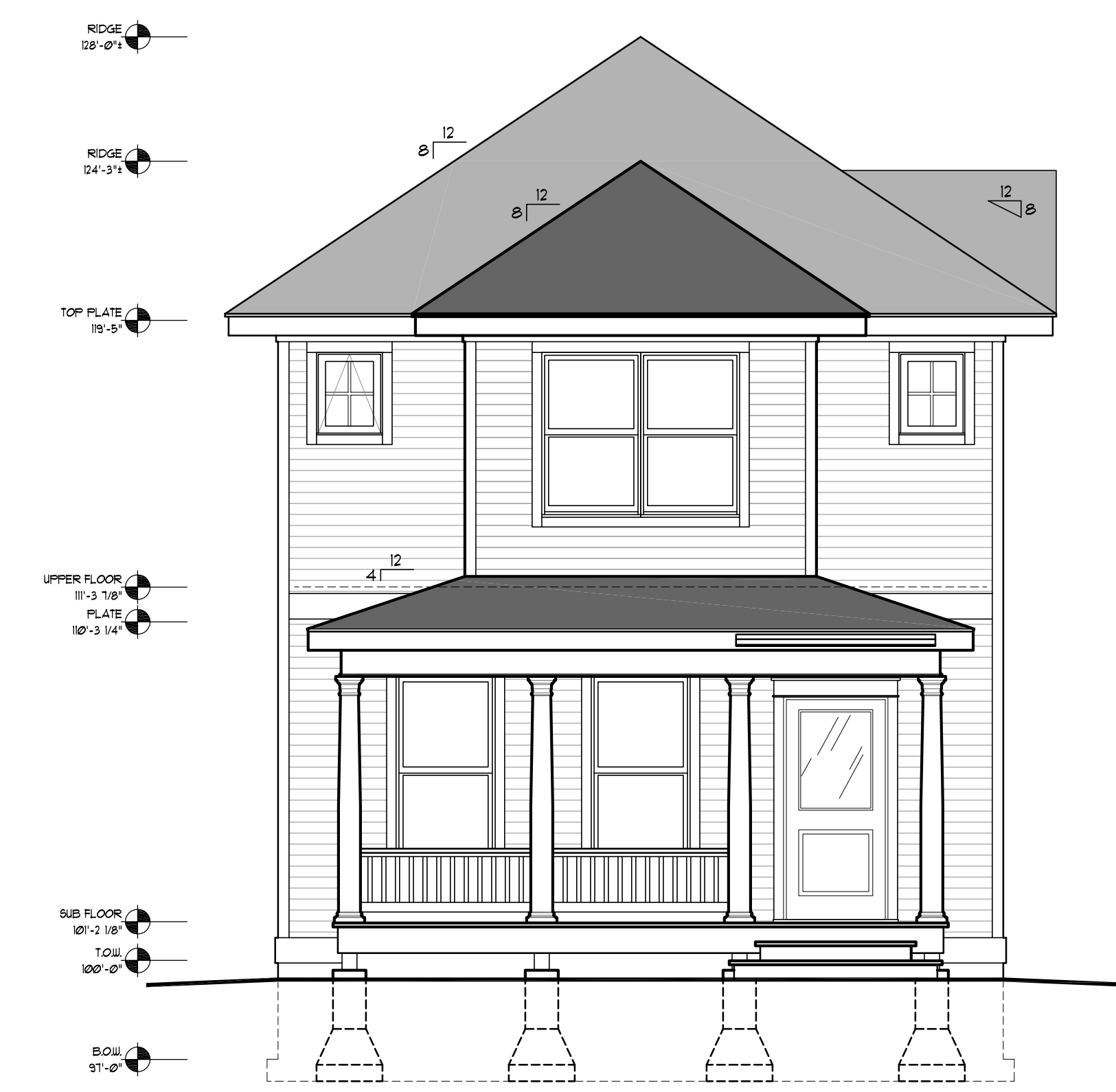
9909

**A2.1**



**LEFT SIDE ELEVATION**

SCALE: 1/4" = 1'-0" (11 X 17 SHEET : 1/8" = 1'-0")

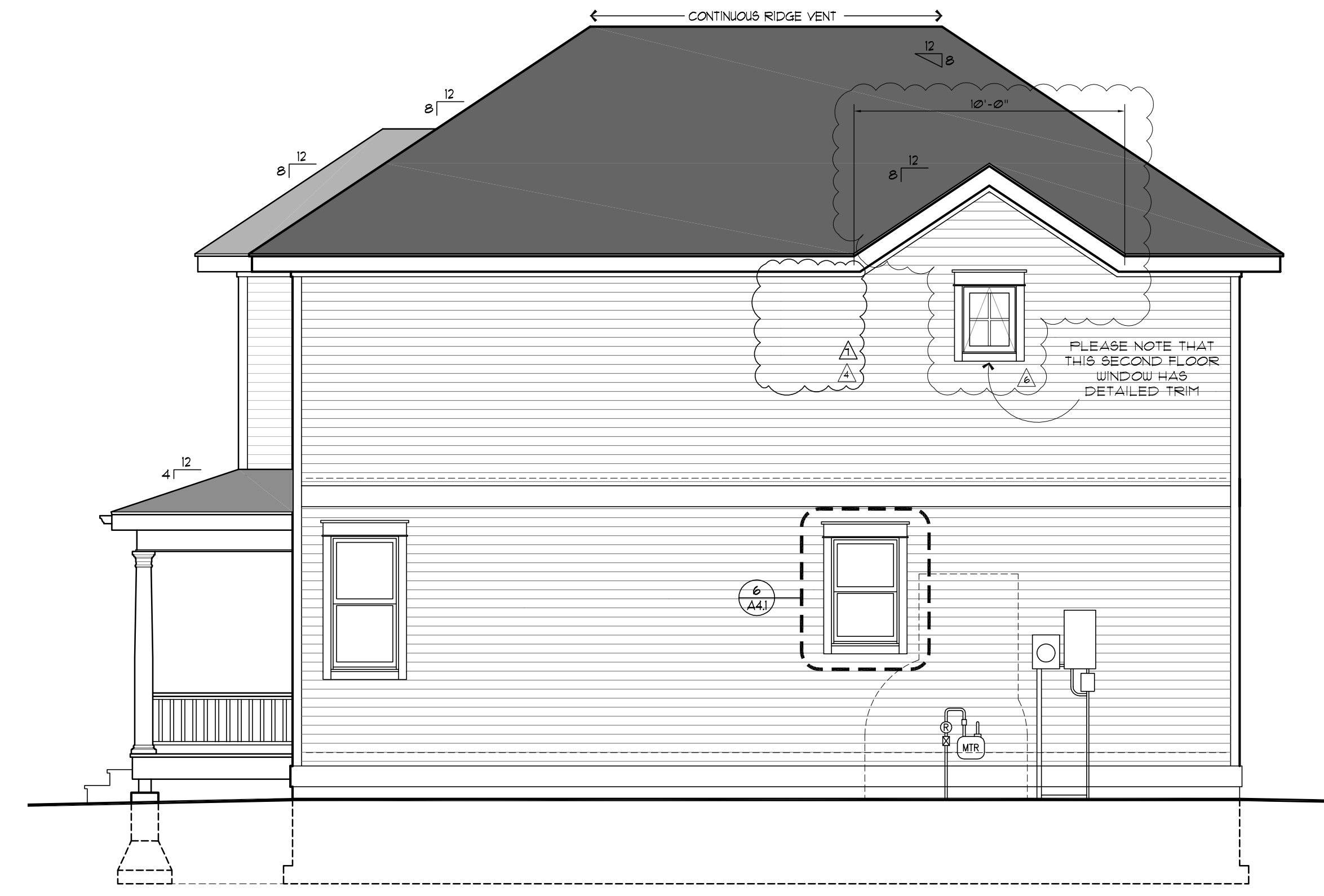


**FRONT ELEVATION**

SCALE: 1/4" = 1'-0" (11 X 17 SHEET : 1/8" = 1'-0")

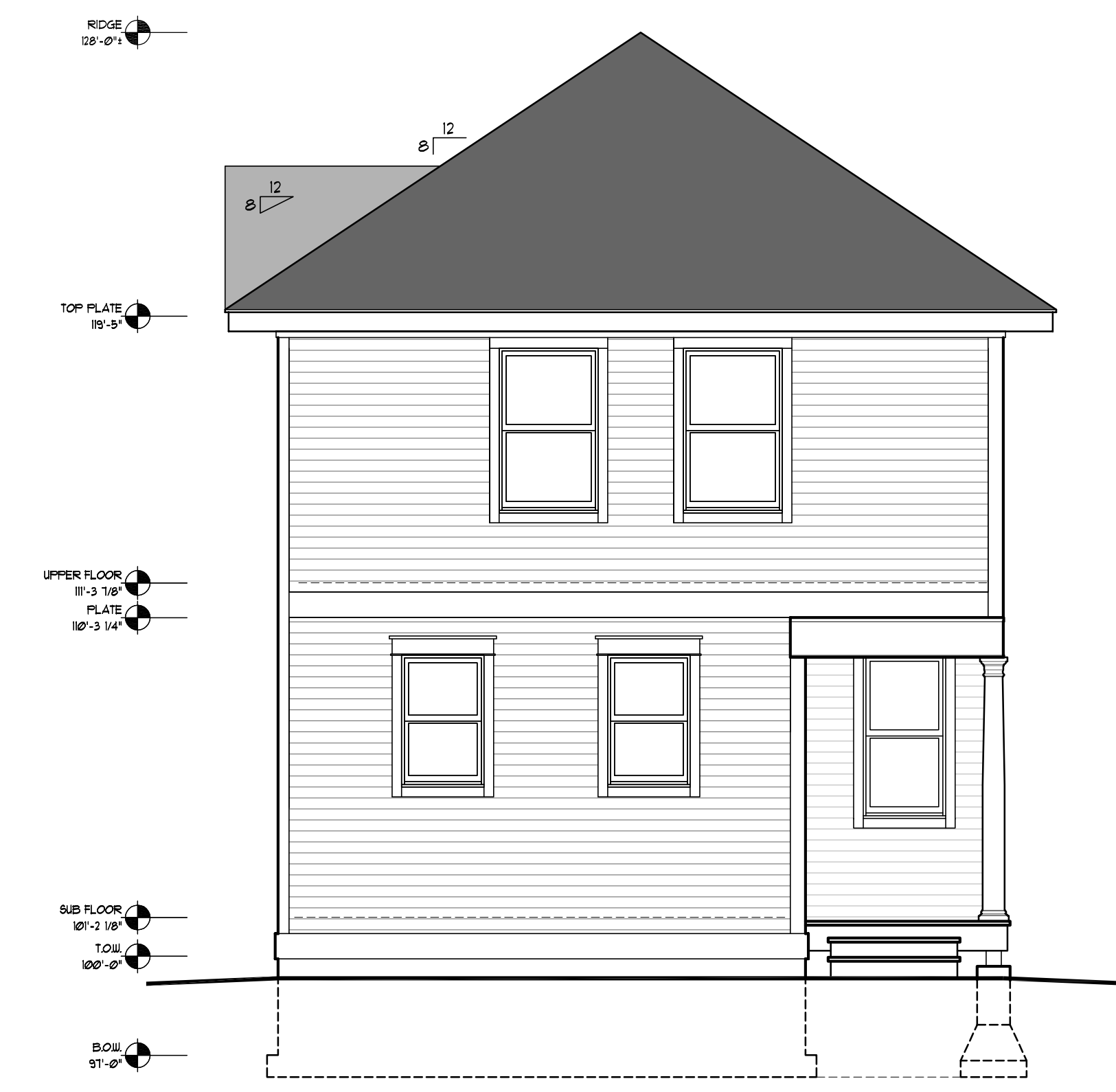
**WINDOW NOTES:**

- 1) MODEL NUMBERS REPRESENT THE 5000 SERIES VINYL WINDOWS FROM MILGARD WINDOWS, INC. UNLESS NOTED OTHERWISE, ANY SUBSTITUTIONS SHALL BE APPROVED BY THE BUILDER/ARCHITECT PRIOR TO ACCEPTANCE OF BID.
- 2) ALL OPERABLE WINDOWS TO BE FURNISHED WITH REMOVABLE BUG SCREENS.
- 3) THE FOLLOWING WINDOW HEAD HEIGHTS SHALL APPLY TO ALL WINDOWS (EXCEPT TRANSOMS) UNLESS NOTED OTHERWISE ON THE ELEVATIONS:  
MAIN LEVEL : 1'-5 3/8" AFF.  
UPPER LEVEL : 6'-11 3/8" AFF.
- 4) PROVIDE SCULPTED MANTIN BARS BETWEEN GLASS PANES AS SHOWN ON ELEVATIONS.



**RIGHT SIDE ELEVATION**

SCALE: 1/4" = 1'-0" (11 X 17 SHEET : 1/8" = 1'-0")



**REAR ELEVATION**

SCALE: 1/4" = 1'-0" (11 X 17 SHEET : 1/8" = 1'-0")

© 2006 WOLFF LYON ARCHITECTS EXPRESSLY RESERVES ITS COMMON LAW COPYRIGHT AND OTHER PROPERTY RIGHTS IN THESE PLANS. THESE PLANS ARE NOT TO BE REPRODUCED, CHANGED, OR COPIED IN ANY FORM OR MANNER WHATSOEVER, NOR ARE THEY TO BE ASSIGNED TO ANY THIRD PARTY WITHOUT FIRST OBTAINING THE WRITTEN PERMISSION AND CONSENT OF WOLFF LYON ARCHITECTS